

C-Series In-Ground Lighting

Our high-quality C-Series In-Ground fixtures have been designed with the elements in mind. From the installation sleeve that's compatible with soil or cement, to the strain relief that works to prevent water from below, or the factory seal that remains sealed as you adjust the light direction, these heavy-duty fixtures are built to integrate with nature.

Durable silicone rubber gaskets to prevent water ingress.

Factory sealed assembly allows for faster installation with no need for installer to open fixture to adjust beam angle; seal also prevents water ingress.

Brass construction for corrosion resistance.

External beam tilt adjustment adjusts light up to 15 degrees in either direction.



For warranty details visit [Kichler.com/Warranty](https://www.kichler.com/Warranty)

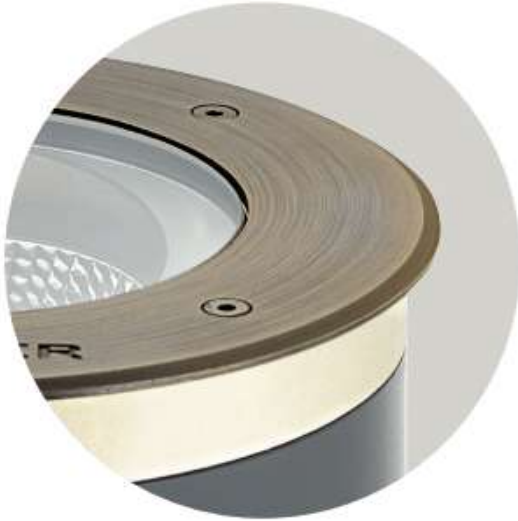
Heavy-duty polymeric sleeve for direct in-ground or concrete commercial installations.

Fully potted driver and sealed driver cavity provides dual protection against water ingress to ensure performance.

Dual cavity design is made up of a brass housing that is divided into two independent compartments. These compartments protect the optical chamber and LED from the operating heat of the driver.



Create a dramatic up-lighting effect to accentuate architectural details and illuminate landmarks.



Exceptionally Engineered

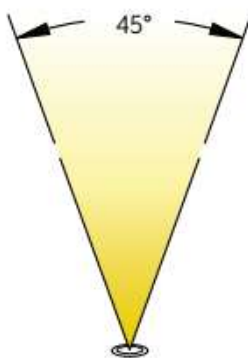
With the Kichler Lighting C-Series In-ground fixture, you can adjust the direction of the beam up to 15-degrees by utilizing an Allen wrench from the outside. This means you don't have to open the fixture, leaving the factory seal intact to better protect against water ingress.



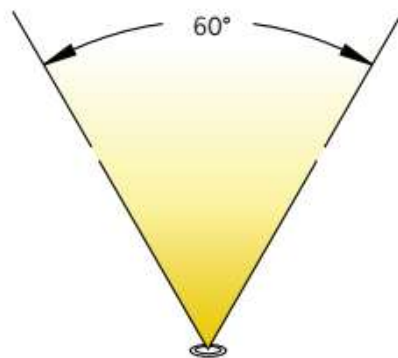
Designed for Versatility

The beam direction adjustment feature adds versatility to each fixture. Whether you need the beam facing up to light a flagpole or pointed directionally to illuminate a section of wall, a simple adjustment can help you accomplish the desired end effect.

Degree Options

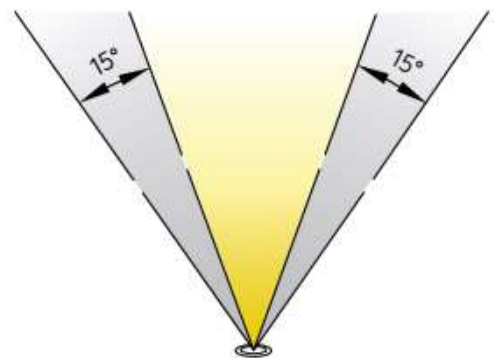


45°
Beam Spread
16227
16230



60°
Beam Spread
16228
16258

Beam Tilt Adjustment




Up to 15° External Beam
Tilt Adjustment in
Either Direction

C-Series In-Ground

Integrated LED – 120V-277V



	In-Ground – 10 W			In-Ground – 20 W		
Finish	CBR			CBR		
Color Temp. (CCT)	3000K	4000K	5000K	3000K	4000K	5000K
Item Number by Beam Spread and Finish + CCT	45° Beam Spread 16227 CBR30	45° Beam Spread 16227 CBR40	45° Beam Spread 16227 CBR50	45° Beam Spread 16230 CBR30	45° Beam Spread 16230 CBR40	45° Beam Spread 16230 CBR50
For Example: 16227+CBR+30= 16227CBR30	60° Beam Spread 16228 CBR30	60° Beam Spread 16228 CBR40	60° Beam Spread 16228 CBR50	60° Beam Spread 16258 CBR30	60° Beam Spread 16258 CBR40	60° Beam Spread 16258 CBR50
Housing	Cast Brass			Cast Brass		
Wattage, Delivered Lumens & Efficacy	9.7W 775 lm 80 lm/W			20.3W 1625 lm 80 lm/W		
CRI	80			80		
Voltage Range	120V-277V, 50-60Hz. Surge protection up to 4kV.					
Light Source	Single, high output, energy efficient COB LED. Tested to a Lumen Maintenance L70 of ≥ 55,000 hours.					
Notes						
Accessories	 16290SS Stainless Steel Trim Ring					
Dimensions	