

# Brass Traditions™

**Distinctive Solid Brass  
and Copper Lighting Fixtures  
Handcrafted by Malco, Inc.**



# A TRADITION OF EXCELLENCE

These distinctive brass and copper lighting fixtures, hand-crafted by our dedicated and skilled crafts persons, will accent your home with brilliance for many years.

The many styles and choices of finish, glass and detail combinations available, mean that choosing just the right fixture(s) for your home and/or business is a sure thing.



## LIFETIME GUARANTEE

All Brass Traditions fixtures carry a lifetime guarantee\* against defects in workmanship. We also offer repair services & replacement glass upon request.

We are a family owned and operated company located in the heart of Litchfield County Connecticut. We have been manufacturing eye-appealing fixtures for over 40 years. Designing & creating the highest quality lighting fixtures has and always will be our goal.

With the lasting quality evident in the Brass Traditions line of lighting fixtures, choosing Made in U.S.A. is not a compromise — it is the right choice.

Brass Traditions Lighting is manufactured by Malco Inc.

\*glass and steel components are not included

# AVAILABLE OPTIONS

## Living Finish Options:



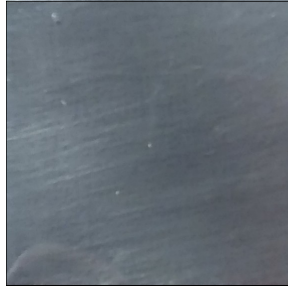
### Antique Brass

Brass fixture is antiqued and relieved for highlighting. There is no lacquer so this finish will darken over time.



### Dark Ant. Brass

Brass fixture is antiqued to a dark antique finish. There is no lacquer so this finish will continue to darken over time.



### Gun Metal

Dark oxidized finish that starts grey and darkens with a blue tint over time.



### Antique Copper

Copper fixture is antiqued and relieved for highlighting. There is no lacquer so this finish will darken and verde gris over time.



### Dark Ant. Copper

Copper fixture is antiqued to a dark antique finish. There is no lacquer so this finish will darken and verde gris over time.

## Painted Lacquer Finish Options:



### Flat Black Lacquer

Brass fixture is painted with a flat black lacquer finish.



### Matte White Lacquer

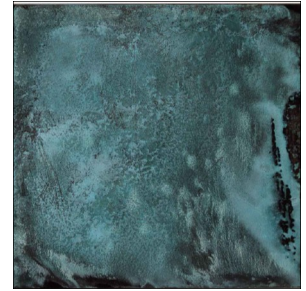
Brass fixture is painted with a matte white lacquer finish.

## Polyurethane Sealed Finish Options:



### Antique Bronze

Brass fixture is darkened to represent antique bronze, the edges are highlighted with relief, then the fixture is lacquered to hold its finish.



### Verde Green

Brass fixture is chemically aged to replicate antiqued copper and is then lacquered to hold its finish.

## OPTION CODES

### FINISH CODES:

Antique Brass  
Dark Antique Brass  
Gun Metal  
Flat Black Lacquer  
Matte White Lacquer  
Antique Copper  
Dark Antique Copper  
Antique Bronze  
Verde Green

**AB**  
**DB**  
**GM**  
**BLK**  
**WH**  
**AC**  
**DC**  
**BZ**  
**VG**  
**RC**  
**RB**

### GLASS CODES:

Clear Glass  
Seeded Glass  
Drawn Antique Glass  
Frosted Glass  
White Opal Glass  
Iridescent Glass  
No Glass

### WIRE CODES:

H Wire Pattern  
X Wire Pattern  
Diamond Wire Pattern

Custom **Double H** Wire Pattern also available

### OTHER CODES:

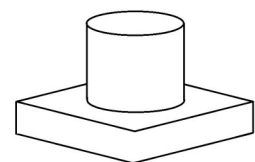
**C** Heavy gauge Bracket  
**S** (wall lanterns only)  
**DA** Down Light  
**F** Gallery Detail  
**W** Arch Detail  
**IR** Tail  
**NG** Flat Arm  
J-arm  
Profile Bracket  
**H** Pendant Arm  
**X**  
**D**

## PIER MOUNT ACCESSORIES

Available in all finishes. Can be added to any of our post lanterns for mounting on masonry.



**P-100 AC** Round Base Pier Mount



**P-200 BLK** Square Base Pier Mount

# 100 SERIES



**120 SH BLK**  
19"H x 7"W x 7"D

**160 DA AB**  
24"H x 9"W x 9"D  
Post Lanterns

**110 SH GM**  
19"H x 9"W x 7"D



**161 CHB BLK**  
23.75"H x 7"W x 8"D



**161 DA VG**  
21"H x 7"W x 8"D  
Wall Lanterns



**131 SH AB**  
10.5"H x 5"W x 5.5"D  
Wall Lanterns



**131 SX BLK**



**151 DA AB**  
15"H x 5"W x 5.5"D



**151 S AC**



**112 SH VG**

16"H x 9"W x 7"D

**122 SH GM**

13"H x 5.75"W x 5.75"D

**132 SH AB**

10.5"H x 5"W x 5"D

\*All Hanging lanterns come with matching 4.5"dia. mounting canopy and 18" of wire & chain



**120-P SH AB**

24.5"H x 7.25"W x 10.5"D

**Wall Lantern**



**111 SHB AB**

19"H x 9"W x 7"D



**111 SH AC (Custom Dbl H)**

16"H x 9"W x 7"D



**171 CH AB**

16.5"H x 5.75"W x 6.75"D



**121-P CH DB**

16.5" x 5.75"W x 8.75"D

Wall Lanterns



**121 SH AC**

13"H x 5.75"W x 6.25"D



**131-P SH GM**

12"H x 5"W x 7.625"D



**131-P SHVG**



**141 S BLK**

12"H x 5"W x 5.5"D



**141 S BLK**

# 200 SERIES



**211 SX GM**  
20"H x 9"W x 9"D

**251 C BLK**  
15"H x 5"W x 5.5"D

**261 DA AB**  
22.5"H x 7"W x 8"D

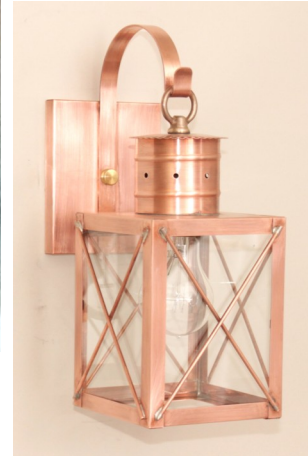
Wall Lanterns



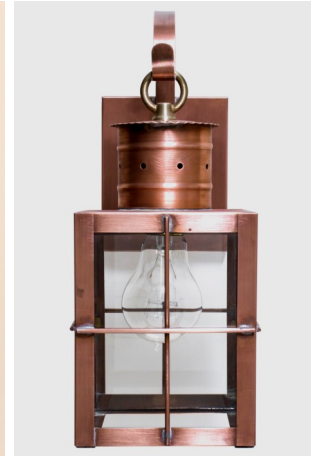
**231 CX AC**  
10"H x 5"W x 5.5"D  
Wall Lantern



**231 SX VG**



**231-P CX AC**  
12.5"H x 5"W x 7.625"D  
Wall Lantern



**231-P CHDC**



**220-P CX GM**  
24.5"H x 7.25"W x 10.5"D  
Wall Lantern



**220 SX BLK**  
18"H x 7"W x 7"D

**260 DA VG**  
24.5"H x 9"W x 9"D  
Post Lanterns

**210 SX AB**  
21"H x 9"W x 9"D



**212 SX VG**

18"H x 9"W x 9"D

**222 SX AB**

14.5"H x 5.75"W x 5.75"D

**232 SX AC**

10"H x 5"W x 5"D



**271 CX BZ**

18.5"H x 5.75"W x 6.25"D  
Wall Lantern

\* All hanging lanterns come with a matching 4.5" dia. Mounting canopy & 18" of chain & wire.



**221 SX AB**

14.5"H x 5.75"W x 6.25"D



**241 DA GM**

11.5"H x 5"W x 5.5"D

Wall Lanterns



**221-P SX AB**

16.5"H x 5.75"W x 8.75"D

# 300 SERIES



**311 SHB AB**  
18.25"H x 9"W x 7.5"D  
Wall Lantern

Proudly Handcrafted



in the USA



**312 SH BLK**

15.5"H x 9"W x 7.5"D

**322 SH VG**

13.5"H x 5.75"W x 5.75"D

**332 SHAB**

10.5"H x 5"W x 5"D

**320-P SX VG**

24.25"H x 7.25"W x 10.5"D

Wall Lantern

\*All hanging lanterns come with a matching 4.5" dia. Mounting canopy & 18" of chain & wire.





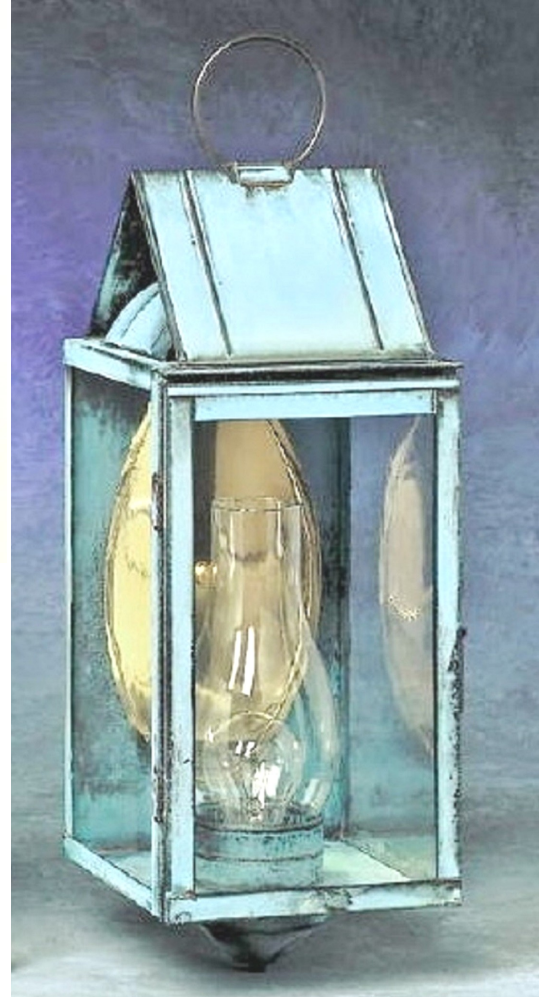
**321 CH AC**  
13.5"H x 5.75"W x 6.75"D



**321-P SH GM**  
16.75"H x 5.75"W x 8.75"D  
Wall Lanterns



**331-P CH DB**  
12.75"H x 5"W x 7.625"D



**361 DA VG**  
22"H x 7"W x 8"D  
Wall Lantern



**331 SHB BLK**  
12.5"H x 5"W x 5.5"D  
Wall Lantern



**331 SX GM**  
10.5"H x 5"W x 5.5"D  
Wall Lantern



**341 DA AB**  
12.5"H x 5"W x 5.5"D  
Wall Lantern



**371 SX BLK**  
17.5"H x 5.75"W x 6.75"D  
Wall Lanterns



**351 DA GM**  
16"H x 5"W x 5.5"D



**320 SH AB**  
19"H x 7"W x 7"D

**360 DA VG**  
23.5"H x 9"W x 9"D  
Post Lanterns

**310 SH AB**  
18.5"H x 9"W x 7.5"D

# 400 SERIES



**420 SH AB**  
18"H x 7"W x 7"D



**460 S AB**  
22"H x 9"W x 9"D  
Post Lanterns



**410 SH BLK**  
18"H x 9"W x 9"D



**471 SH BLK**



**471 CH VG**

16.5"H x 5.75"W x 6.75"D  
Wall Lantern



**420-P S SAB**  
24.5"H x 7.25"W x 10.5"D  
Wall Lantern



**411 SH GM**  
16.5"H x 9"W x 9"D



**451 C VG**  
14.5"H x 5"W x 5.5"D  
Wall lanterns



**461 DA AB**  
20.5"H x 7"W x 8"D



**412 SH VG**  
16"H x 9"W x 9"D

**422 SH DC**  
12.5"H x 5.75"W x 5.75"D

**432 SH GM**  
10"H x 5"W x 5"D



**421-P WD WH**  
16.25"H x 5.75"W x 8.75"D



**431-P CH BZ**  
12.5"H x 5"W x 7.625"D

\*All hanging lanterns come with matching 4.5"dia. Mounting canopy & 18" chain & wire.

Wall Lanterns



**421 SHB AB**  
15"H x 5.75"W x 6.75"D



**421 SXB BLK**



**441 DA BLK**  
12"H x 5"W x 5.5"D  
Wall Lanterns



**431 CX VG**  
10"H x 5"W x 5.5"D



**431 SH VG**

# 500 SERIES



**560 DA VG**  
26"H x 9"W x 9"D  
Post Lantern



**520-P S GM**  
24.5"H x 7.25"W x 10.5"D  
Wall Lantern



**520-P SD BLK**



**520 SH DB**  
20"H x 7"W x 7"D  
Post Lantern



**520 SX AB**



**531-P S VG**



**531-P SX AC**  
12.5"H x 7.25"W x 10.5"D  
Wall Lantern



**531-P SD DB**



**531 SX GM**  
10.75"H x 5"W x 5.5"D



**541 DA AB**  
13"H x 5"W x 5.5"D



**571 CX AB**  
17.25"H x 5.75"W x 6.75"D  
Wall Lanterns



**511 SX AB**  
21"H x 9"W x 7.75"D

**551 DA BLK**  
16.5"H x 5"W x 5.5"D

**561 DA VG**  
23"H x 7"W x 8"D

Wall Lanterns



**521-P SX AB**  
16.75"H x 5.75"W x 8.75"D  
Wall Lantern

**521-P SX GM**

**512 SX AB**  
20"H x 9"W x 9"D

**522 SX AB**  
14"H x 5.75"W x 5.75"D

**532 SX GM**  
10.75"H x 5"W x 5"D

\*All hanging lanterns come with matching 4.5" dia. Mounting canopy and 18" matching chain and wire.



**521 SX BZ**  
13.5"H x 5.75"W x 6.25"D

**521 SXB AB**  
15"H x 5.75"W x 6.25"D  
Wall Lantern

Proudly Handcrafted



in the USA



# 600 SERIES: ONION LIGHTS



**\*Onion Lanterns not available in Flat Black or White finish options.**



**601-1 AB**  
26"H x 14.5"W x 15"D



**611-OPT AC**  
21.5"H x 11"W x 12.5"D



**611 VG**



**623 AC**  
12"H x 8"W x 8"D  
Flush Mount

Wall Lanterns



**621 VG**



**621-OPT-RC**  
16.5"H x 9"W x 10"D



**621-OPT-BZ**

Wall Lanterns



**631 AB**



**631-OPT-BZ**

13.75"H x 7.5"W x 8"D



**602-3 AB**  
21"H x 14.5"W x 14.5"D



**632 VG** 10"H x 7"W x 7"D      **622 GM** 12"H x 8"W x 8"D      **612 AC** 19"H x 11"W x 11"D  
\*All hanging lanterns come with matching 4.5" dia. Mounting canopy & 18" matching chain and wire.



**651 GM** 12"H x 5.75"W x 7"D      **641 AB** 13.75"H x 5.75"W x 7.5"D  
Wall Lanterns

**633 AB** 11"H x 7"W x 7"D  
Flush Mount



**610 AB** 21"H x 11.5"W x 11.5"D  
Post Lanterns



**610-OPT BZ**



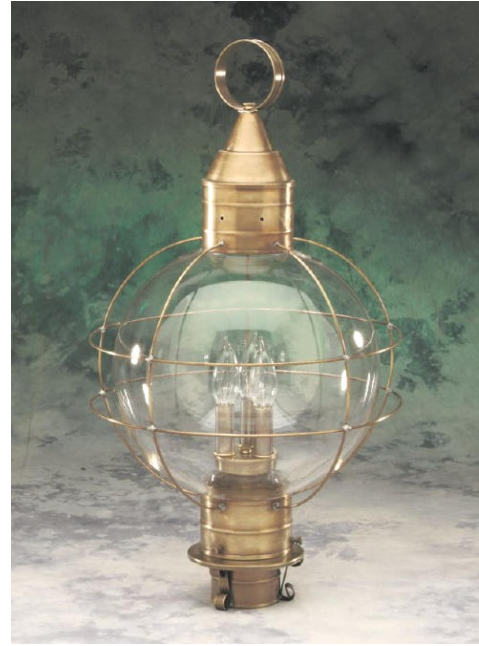
**620 GM** 17"H x 9"W x 9"D



**620-OPT RC**



**600-1-OPT AB** 25"H x 14.5"W x 14.5"D  
Post Lantern



**600-3 AB**

# 700 SERIES

**BT-Brass Top GT-Glass Top**  
Both options available on any and all 700 Series fixtures



**710-GT C VG**  
24"H x 12"W x 12"D



**710-BT C GM**



**730-GT S BLK**  
17"H x 7.25"W x 7.25"D



**720-BT C AB**  
21"H x 9"W x 9"D

Post Lanterns



**721-BT C AC**  
19"H x 9"W x 11"D



**731-BT C BLK**  
15"H x 7"W x 9"D

Wall Lanterns



**711-GT S VG**  
22"H x 12"W x 14"D  
Wall Lantern



**711-BT C AB**



**712-GT S GM**  
22"H x 12"W x 12"D

**722-BT S DB**  
19"H x 9"W x 9"D

**732-GT C VG**  
15"H x 7"W x 7"D

\*All hanging lanterns come with a matching 4.5"dia. Mounting canopy and 18" matching chain and wire.



# 800 SERIES & 900 SERIES



**821 C AB**  
16"H x 8"W x 7.5"D

**831 DA BLK**  
16"H x 5.5"W x 6.25"D

**811 C VG**  
16"H x 6.5"W x 6.5"D



**931 DA AB**  
15.625"H x 8"W x 7.5"D

**911 DA BLK**  
15.625"H x 5.5"W x 6"D

**931 C VG**  
15.625"H x 5.5"W x 6.5"D

Wall Lanterns



**811 C WH Custom**  
with Custom Aluminum reflector



**901 BLK**

**901 RC**

**901 AB**

6.25"H x 4.325"W x 4.625"D



**902 BZ**

4.25"H x 12.625"W x 6.125"D



# 900 SERIES (CONTINUED)



**980 C VG**  
22.5"H x 9"W x 9"D

**970 C AB**  
18.75"H x 7"W x 7"D

Post Lanterns



**982 S BLK**  
21.5"H x 9"W x 9"D  
Hanging Lantern



**972 C VG**  
17.5"H x 7"W x 7"D



**981-C-AB**  
25"H x 9"W x 11.5"D

**971-C-GM**  
20"H x 7"W x 9.5"D

Wall Lanterns

\*All hanging lanterns come with a matching 4.5" dia. Mounting canopy and 18" matching chain and wire.

# 1000 SERIES



**1081 AC**  
9"H x 8.25"W x 9.75"D  
Wall Sconce  
**1081 VG**



**1010-G S AB**  
26"H x 9.25"W x 9.25"D  
Post Lantern



**1012 S GM**  
22.5"H x 9.25"W x 9.25"D

**1022-G S AB**  
15.5"H x 5.75"W x 5.75"D

**1032 W AC**  
12.5"H x 5"W x 5"D

\* All hanging Lanterns come with a matching 4.5" dia. Mounting canopy & 18" chain and wire.



**1031-G CB VG**  
15.5"H x 4.75"W x 5.325"D

**1021 C BLK**  
16"H x 5.75"W x 6.25"D

**1011-G C AB**  
22.25"H x 9.25"W x 10"D

Wall Lanterns



**1071 C BZ**  
19"H X 5.75"W x 6.75"D

# 1100 SERIES

Flush Mount Lanterns (Indoor/Outdoor)



**1132-G S AB** 5.25"H x 11"W x 9.625"D  
**1133-G S VG** 7.325"H x 7.5"W x 6.625"D  
**1131-G S GM** 5.25"H x 9.25"W x 8"D



**1152 VG** 2.75"H x 6.75"W x 9.5"D  
**1153 AB** 2.75"H x 6.75"dia.  
**1151 AB** 2.75"H x 11.5"dia.



**1142 W WH**



**1122 S AB** 5.25"H x 10.25"W x 10.25"D  
**1121 SX VG** 5.25"H x 8.5"W x 8.5"D  
**1123 SX BLK** 7.325"H x 6.625"W x 6.625"D



**1121 SX VG**

**1151 DB**



**1122 FH BZ (custom dbl H)**

**1141 S VG**



**1142-G S AB** 5"H x 10.25"W x 10.25"D

**1141 S BLK** 5"H x 8.5"W x 8.5"D

# 1200 SERIES



**1211-A-3 C AB**  
25"H x 10.25"W x 10.5"D



**1221-AT C VG**  
31.325"H x 8"W x 8.5"D  
Wall Lanterns



**1231 C BLK**  
15.875"H x 8"W x 8.5"D



**1210-A-3 C AB**  
25.5"H x 10.25"W x 10.25"D



**1220 C BLK**  
20.5"H x 8.5"W x 7.5"D

Post Lanterns

Proudly Handcrafted



in the USA

# 1300 SERIES



**1311 DA GM**  
23"H x 9"W x 9.5"D  
Wall Lantern



**1320 C BLK**  
18.75"H x 5.75"W x 5.75"D

**1310 S AB**  
26"H x 9"W x 9"D  
Post Lanterns



**1371 C AB**  
19.25"H x 5.75"W x 6.75"D



**1321-DL C BZ**  
20"H x 5.75"W x 6"D



**1321 C AC**  
16.25"H x 5.75"W x 6"D  
Wall Lanterns



**1381 BZ**  
8.25"H x 7"W x 9.75"D  
Wall Sconce



**1331 C VG**  
13"H x 5"W x 5.5"D

# 1400 SERIES



**1410 S VG**  
24.5"H x 9"W x 9"D  
Post Lantern



**1431 S AB**  
14.75"H x 5"W x 7.5"D

**1421 S VG**  
18.25"H x 5.75"W x 8.25"D  
Wall Lanterns

Proudly Handcrafted



in the USA



**1460 IR VG**  
15"H x 8"W x 8"D  
Post Lantern

**1461 IR AB**  
8.75"H x 6.5"W x 6.75"D  
Wall Lantern



**1471 C AC**  
18.75"H x 5.75"W x 6.75"D  
Wall Lantern

# 1500 SERIES



**1511 C BLK**  
15.25"H x 9.25"W x 6.25"D  
Wall Lanterns



**1521 C AB**  
12.25"H x 5.75"W x 6"D



**1510 C AB**



**1510 S VG**  
22"H x 9"W x 9"D  
Post Lantern



**1501 C VG**  
19.25"H x 12.5"W x 6.25"D  
Wall Lantern



# 1600 SERIES



**1610-3 C BLK**  
27"H x 11"W x 11"D

**1620-2 C GM**  
22.25"H x 8.5"W x 8.5"D

Post Lanterns



**1611-3 C AB**  
25.25"H x 11"W x 12.5"D

**1621-2 C VG**  
20"H x 8.25"W x 9.5"D

Wall Lanterns



**1623-2 C GM**  
21.5"H x 8.5"W x 8.5"D  
Pendant Lantern

Also Available but not pictured **1622**  
Hanging lantern (same cage as 1623)  
comes with 18" of chain rather than  
pendant mounting

# 1700 SERIES



**1761 CX AB** 24.5"H x 7"W x 8"D  
**1721 CX AB** 18"H x 5.75"W x 6.25"D  
**1731 CX VG** 15"H x 5"W x 5.5"D  
 Wall Lanterns



**1771 C AB**  
 22"H x 5.75"W x 6.75"D  
 Wall Lantern



**1710 CX AB**  
 21.25"H x 7"W x 7"D  
 Post lantern

Proudly Handcrafted



in the USA



**1720-P W DB**  
 24.5"H x 7.25"W x 10.5"D



**1721-P SH AB**  
 16.5"H x 5.75"W x 8.75"D  
 Wall Lanterns



**1722 SX VG** 15"H x 5.75"W x 5.75"D  
**1732 CX GM** 12"H x 5"W x 5"D  
 \*All hanging lanterns come with matching 4.5" dia. Mounting canopy and 18" chain and wire.



**1731-P SX GM**  
 12.5"H x 5"W x 7.625"D

# 1800 SERIES



**1860-3 S GM**  
20.5"H x 9"W x 9"D

**1820 DA AB**  
17.5"H x 7"W x 7"D

Post Lanterns



**1871 DA BZ**  
19.75"H x 5.75"W x 6.5"D

**1821 DA AB**  
15.5"H x 5.75"W x 6.25"D

Wall Lanterns



# 1900 SERIES GARDEN LIGHTS



**1950 AC**  
18"H x 7.25"W x 7.25"D



**1970 DB**  
18.5"H x 7.25"W x 7.25"D



**1960 AB**  
19"H x 7.75"W x 7.75"D

# 2000 SERIES FOYER LANTERNS



**2024-4 S AB**  
19.25"H x 10"W x 10"D



**2052-4-G C VG**  
22"H x 10"W x 10"D



**2092-3 GM (NG)**  
22"H x 11.75"W x 11.75"D

\*All hanging lanterns come with matching 4.5" dia. Mounting canopy and 18" matching chain and wire.



**2031-1 DA BZ**  
8.25"H x 5"W x 4.25"D

**2030-2 S AB**  
8.25"H x 8.5"W x 4.25"D

**2032-2 DA GM**  
8.25"H x 8.5"W x 4.25"D



**2023-3-G C AB**  
11.25"H x 11.25"W x 11.25"D



**2021-3 GM (NG)**  
17"H x 11"W x 11"D



**2053-3-G S BZ**  
11.25"H x 10.5"W x 10.5"D



**2022-4-G S BZ**  
22"H x 12.25"W x 12.25"D



**2022-3 H GM (NG)**



**2024-4-G S AB**  
19.25"H x 12.25"W x 12.25"D

# NEW PRODUCTS: 2100 SERIES



**2161-2 C AB**  
19"H x 7"W x 8"D



**2171 CHB AC**  
20"H x 5.75"W x 6.75"D



**2111 C AC**  
19"H x 9"W x 7.5"D

# 3000 SERIES: BARN LIGHTS



**3001-P DB**  
15.5"H x 6.75"dia.



**3101-P AB**  
13.25"H x 7.25"dia.



**3201-P DB**  
14"H x 8"dia.

\*Pendant Style Barn Lights all have an 11" stem & come with matching 4.5"dia. Mounting canopy and 24" matching chain and wire.



**3001-F AC**  
9.25"H x 6.75"W x 10.25"D



**3003-F DB**  
7.75"H x 23.75"W x 10"D



**3001-J AB**  
13"H x 6.75"W x 10.25"D



**3101-J BZ**  
13"H x 7.25"W x 10.5"D



**3101-F AB**  
9.25"H x 7.25"W x 10.25"D



**3201-J GM**  
13"H x 6.75"W x 10.25"D



**3102-F BZ**  
10.25"H x 17"W x 9.25"D



**3103-J AB**  
12.25"H x 21"W x 10"D



**3202-J DB**  
10.25"H x 17"W x 10"D

Proudly Handcrafted



in the USA

# NEW PRODUCTS: 4000 SERIES



**4001 WD GM**  
10.5"H x 6.5"W x 7.25"D



**4001 WD AC**  
Wall Lanterns



**4002 SD BZ**  
14"H x 8"W x 8.5"D



**4012 DA H GM**  
12"H x 9"W x 9"D  
Hanging Lantern



**4510-3 C GM**  
18"H x 9"W x 9"D



**4003-3 CD AB**  
18.25"H x 11.5"W x 11.5"D  
Post Lanterns



**4003 CD AB**  
(shown with P-100 Pier Mount)





**4521 C AB**



**4521 DA AC**

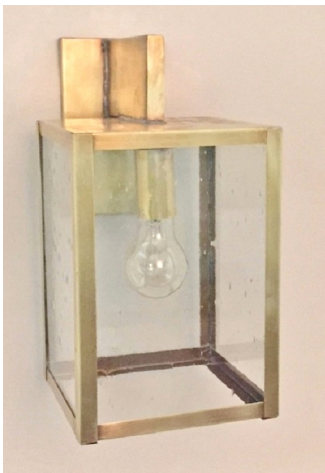


**4521 F AB**



**4521 C GM**

18"H x 9"W x 12"D  
Wall Lantern



**4421 S AB**



**4421 C DC**



**4421 C BZ**

13"H x 7"W x 9.75"D  
Wall Lantern



**4421 C BLK**



**4451 C GM**



**4451 C BLK**  
17"H x 5.5"W x 9"D



**4451 S BLK**



**4511-2 DA GM**  
18.5"H x 9"W x 12"D



Wall Lanterns

# 4000 SERIES (CONTINUED)



**4321 C BLK**  
13"H x 5.5"W x 9"D  
Wall Lantern



**4321 C AC**



**4921 S DB**  
14.5"H x 6.75"W x 6.5"D



**4821 C AB**  
15"H x 9"W x 12"D  
Wall Lanterns



**4721 C BZ**  
10.5"H x 7"W x 9.75"D



**4431 C BZ**  
21"H x 5.5"W x 9"D



**4751 S GM**  
15"H x 5.5"W x 9"D



Wall Lanterns



**4981 S GM**  
18"H x 7"W x 7.5"D



# NEW PRODUCTS: 5000 SERIES



**5011-2 DA BZ**  
16"H x 9"W x 8"D



**5071 DA GM**  
22"H x 5.75"W x 6.75"D

Wall Lanterns





# BRASS TRADITIONS LIGHTING BY MALCO INC.

P.O. BOX 326, NAPCO DRIVE, TERRYVILLE, CT 06786

P: 860.584.0446 – F: 860.584.9861 – TOLL FREE: 800.245.9566

WWW.BRASSTRADITIONS.COM – OFFICE@BRASSTRADITIONS.COM – WWW.FACEBOOK.COM/BRASSTRADITIONS

