



Access is now partnering with Philips Hue to bring you smart and connected lighting. Access Lighting has developed color changing Indoor and Outdoor Decorative lighting for all applications.



About Philips Hue

Philips Hue and Friends of Hue work together so you can enjoy the richest lighting experience in your environment. Use the Philips Hue app, wireless light switches, motion sensors, or even your voice* to set the mood for any moment. Philips Hue also connects to other smart products, so you have even more ways to bring your smart home to life. All you need is the square shaped Philips Hue bridge, or get started with a wireless dimmer switch for basic control.

Philips Hue white ambiance

Set the right ambiance for any moment. Philips Hue can help you energize, read, concentrate and relax with the right shade of soft, white light. Use the Philips Hue app or dimmer switch to change your light settings, from cool energizing daylight to relaxing, warm, white light.

Philips Hue white and color ambiance

Party with 16 million colors or set any shade of white light from cool energizing daylight to relaxing, warm white light to help you focus or relax. Match the color of your light to your mood. Then save your favorite light settings and recall them whenever you want with the tap of a finger.

Getting started with Philips Hue

You can start with a wireless dimmer switch and a Friend of Hue lamp for easy wireless control. With a Philips Hue dimmer switch you can control up to 10 lights simultaneously (on/off/dimming/light recipes). When you're ready, simply add a bridge to unlock the full Philips Hue experience. Create your personal scenes, set timers, enjoy sleep and wake up routines, even control your lights when you're away. With the square Philips Hue Bridge you can control all your lamps throughout your home using the Philips Hue app, Philips Hue accessories, and even with your voice when using other compatible smart products.

Set up your Philips Hue bridge in 3 simple steps

To set up your Philips Hue bridge, all you have to do is power up your lights, connect the bridge and download the app in the App Store or Google Play Store.

**Bridge, Wireless Light Switches and Voice Control sold separately.*

These visuals show how to install and control Hue.



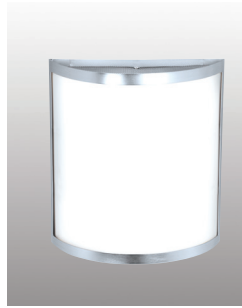


Set any shade of white light from cool energizing daylight to 16 million colors

Access Lighting models that utilize Philips Hue - WHITE and COLORED AMBIANCE



Artemis
20440LEDSWA



Artemis
20439LEDSWA



Artemis
20416LEDSWA



Prong
20447LEDSWA



Prong
20446LEDSWA



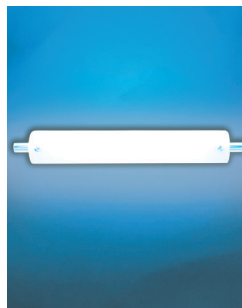
Vector
20451LEDSWA



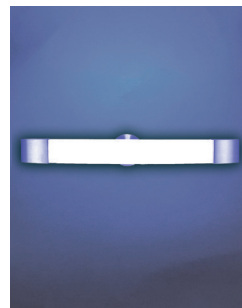
Iron
20739LEDSWA



Vail
31000LEDSWAC



Vail
31002LEDSWAC



Aspen
31004LEDSWAC



Cobalt
20626LEDSWAC



Atom
20725LEDSWAC



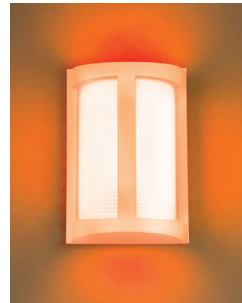
TomTom
20747LEDSWAC



Orion
50162LEDSWAC



Oceanus
20356LEDSWAC



Pier
20042LEDSWAC



Destination
20041LEDSWAC



Bermuda
20010LEDSWAC



Bermuda
20030LEDSWAC



Nevis
20031LEDSWAC

- ▶ Every room can have a separate light switch for tuning the color and on/off control.
- ▶ All this while being controlled by the hundreds available apps for Hue and/or Hue bridge: remotely or locally.